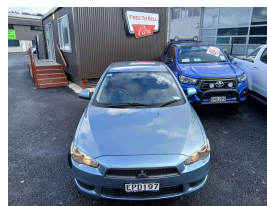
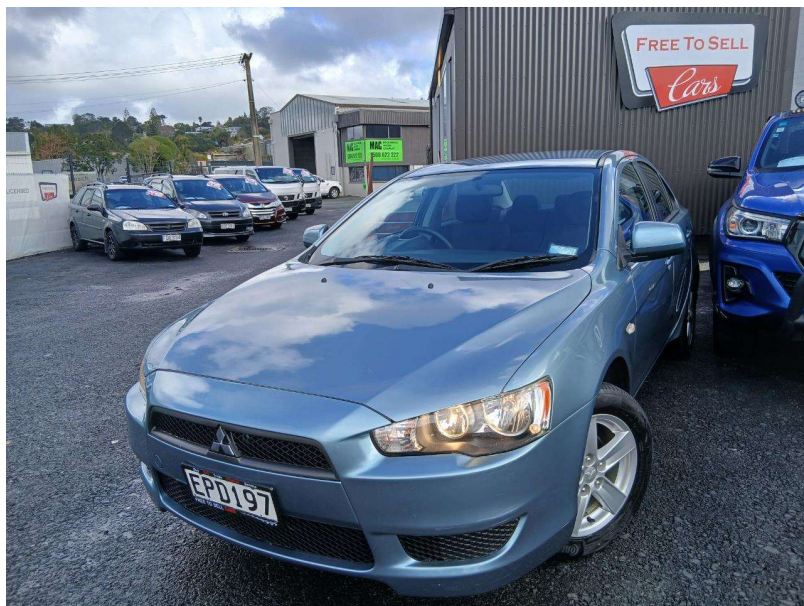


2008 Mitsubishi Lancer 2.0P SX SEDAN AUTO



VEHICLE INFORMATION

Cash Price

Includes GST,
Registration &
Licensing

\$11,995

Finance this vehicle
from only

\$59.75

per week*

Total Amount Payable
\$17,934.75



Body

4 door, Sedan

Odometer

75,376 km

Engine

1998 cc, Internal Combustion

Fuel Type

Petrol

Transmission

Automatic, Front Wheel Drive

Wheels

Factory Alloys

VIN

JMFSTCY4A9U000207

Reg No.

EPD197

Ext Colour

Blue

History

NZ New, 2 owners

Seats

5 seats, Deluxe cloth

Interior

Dark Grey, Deluxe Cloth

Audio

-

Stock ID

10101



Gain peace of mind
with Mechanical
Breakdown Insurance.
Ask us how.

Exterior Features

- » Alloy Wheels
- » Central Locking
- » Electric Mirrors
- » Electric Windows
- » Heated Rear Window
- » Tow Bar

Interior Features

- » Air Conditioning
- » Airbags
- » Central Locking
- » Full Band Radio
- » Full Size Spare

Mechanical Features

- » 16 Valve
- » ABS Braking
- » Aspirated
- » Chain Drive
- » Mivec Eng
- » New WOF on Sale
- » NZ New
- » Power Steering
- » Serviced Up to Date
- » Traction Control



Free to Sell, Phone 09 430 3000, Email info@freetosell.co.nz
40 Porowini Avenue, Whangarei 0110, New Zealand
www.freetosell.co.nz

* Finance calculation based on a 60 month term, 20% deposit and with an example annual fixed interest rate of 14.95%. Actual interest rate may be higher or lower. Includes an establishment fee of \$1,300.00. Full term total amount payable of \$17,934.75. Estimate only, not an offer of finance. Terms, conditions and lending criteria apply.