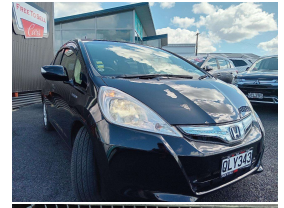


# 2012 Honda Fit 1.3 Hybrid



## VEHICLE INFORMATION

### Cash Price

Includes GST,  
Registration &  
Licensing

**\$12,995**

Finance this vehicle  
from only

**\$57.83**

per week\*

Total Amount Payable

**\$17,635.71**



### Body

5 door, Hatchback

### Odometer

68,060 km

### Engine

1339 cc, Hybrid

### Fuel Type

Petrol

### Transmission

Automatic, Front Wheel Drive

### Wheels

Factory Alloys

### VIN

7AT08G2YX23208177

### Reg No.

QLY343

### Ext Colour

Black

### History

Ex-Overseas, 1 owner

### Seats

5 seats, Deluxe cloth

### Interior

Black, Deluxe Cloth

### Audio

-

### Stock ID

9742



Gain peace of mind  
with Mechanical  
Breakdown Insurance.  
Ask us how.

### Exterior Features

- » Alloy Wheels
- » Body Kit (Factory)
- » Central Locking
- » Electric Mirrors
- » Electric Windows
- » Heated Rear Window
- » Monsoon Shield
- » Reverse Camera
- » Tinted Windows

### Interior Features

- » Air Conditioning
- » Airbags
- » Bluetooth - Media & Calling
- » Central Locking
- » Full Band Radio
- » Reverse Camera

### Mechanical Features

- » 16 Valve
- » ABS Braking
- » Aspirated
- » Chain Drive
- » Cruise Control
- » ESC
- » Hybrid Synergy Drive
- » New WOF on Sale
- » Power Steering
- » Serviced Up to Date
- » Traction Control



Free to Sell, Phone 09 430 3000, Email [info@freetosell.co.nz](mailto:info@freetosell.co.nz)  
40 Porowini Avenue, Whangarei 0110, New Zealand  
[www.freetosell.co.nz](http://www.freetosell.co.nz)

\* Finance calculation based on a 60 month term, 20% deposit and with an example annual fixed interest rate of 14.95%. Actual interest rate may be higher or lower. Includes an establishment fee of \$150.00. Full term total amount payable of \$17,635.71. Estimate only, not an offer of finance. Terms, conditions and lending criteria apply.