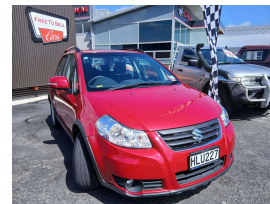


2014 Suzuki SX4 LTD 2.0 2WD NZ New



VEHICLE INFORMATION

Cash Price

Includes GST,
Registration &
Licensing

\$11,995

Finance this vehicle
from only

\$59.75

per week*

Total Amount Payable

\$17,934.75



Body

5 door, Sedan

Odometer

71,851 km

Engine

1995 cc, Internal Combustion

Fuel Type

Petrol

Transmission

Automatic, Front Wheel Drive

Wheels

Factory Alloys

VIN

JSAGYA51S00502069

Reg No.

HLU227

Ext Colour

Red

History

NZ New, 2 owners

Seats

5 seats, Deluxe cloth

Interior

Black, Deluxe Cloth

Audio

-

Stock ID

10228



Gain peace of mind
with Mechanical
Breakdown Insurance.
Ask us how.

Exterior Features

- » Alloy Wheels
- » Automatic Headlights
- » Central Locking
- » Electric Mirrors
- » Electric Windows
- » Fog Lights
- » Heated Rear Window
- » Rear Wiper
- » Roof Rails

Interior Features

- » Air Conditioning
- » Airbags
- » Bluetooth - Media & Calling
- » Central Locking
- » Full Band Radio
- » Proximity Key
- » Steering Wheel Controls

Mechanical Features

- » 16 Valve
- » ABS Braking
- » Aspirated
- » Chain Drive
- » ESC
- » New WOF on Sale
- » NZ New
- » Power Steering
- » Serviced Up to Date
- » Traction Control



Free to Sell, Phone 09 430 3000, Email info@freetosell.co.nz
40 Porowini Avenue, Whangarei 0110, New Zealand
www.freetosell.co.nz

* Finance calculation based on a 60 month term, 20% deposit and with an example annual fixed interest rate of 14.95%. Actual interest rate may be higher or lower. Includes an establishment fee of \$1,300.00. Full term total amount payable of \$17,934.75. Estimate only, not an offer of finance. Terms, conditions and lending criteria apply.