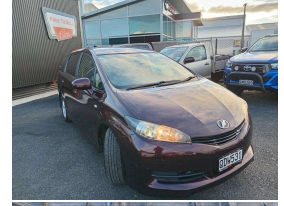
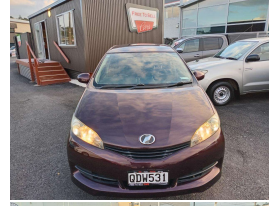


# 2011 Toyota WISH 1.8L



## VEHICLE INFORMATION

### Cash Price

Includes GST,  
Registration &  
Licensing

**\$10,995**

Finance this vehicle  
from only

**\$55.37**

per week\*

Total Amount Payable

**\$16,594.09**



Gain peace of mind  
with Mechanical  
Breakdown Insurance.  
Ask us how.

### Body

5 door, Van

### Odometer

91,578 km

### Engine

1797 cc, Internal Combustion

### Fuel Type

Petrol

### Transmission

Automatic, Front Wheel Drive

### Wheels

Factory Alloys

### VIN

7AT0H64BX23092617

### Reg No.

QDW531

### Ext Colour

PURPLE

### History

Ex-Overseas, 1 owner

### Seats

7 seats, Deluxe cloth

### Interior

Dark Grey, Deluxe Cloth

### Audio

-

### Stock ID

10036

### Exterior Features

- » Alloy Wheels
- » Automatic Headlights
- » Central Locking
- » Electric Mirrors
- » Electric Windows
- » Heated Rear Window
- » Rear Wiper
- » Reverse Camera
- » Tinted Windows

### Interior Features

- » Air Conditioning
- » Airbags
- » Central Locking
- » Reverse Camera

### Mechanical Features

- » 16 Valve
- » ABS Braking
- » Aspirated
- » Chain Drive
- » New WOF on Sale
- » Power Steering
- » Serviced Up to Date
- » Traction Control



Free to Sell, Phone 09 430 3000, Email [info@freetosell.co.nz](mailto:info@freetosell.co.nz)  
40 Porowini Avenue, Whangarei 0110, New Zealand  
[www.freetosell.co.nz](http://www.freetosell.co.nz)

\* Finance calculation based on a 60 month term, 20% deposit and with an example annual fixed interest rate of 14.95%. Actual interest rate may be higher or lower. Includes an establishment fee of \$1,300.00. Full term total amount payable of \$16,594.09. Estimate only, not an offer of finance. Terms, conditions and lending criteria apply.